

Analysis of Beta Blockers Using a Core Enhanced Technology Accucore HPLC Column

Application #609

25 February 2013

Copyright © 2010 Thermo Fisher Scientific Inc.

Exported by Thermo Fisher Scientific Applications Library

Analysis of Beta Blockers Using a Core Enhanced Technology Accucore HPLC Column

General Information

Market: Pharmaceutical

Matrix: N/A

Instrument type: HPLC

Description

This application note demonstrates the use of the Thermo Scientific Accucore RP-MS HPLC column for the fast analysis of six beta-blockers.

Method Details

Instrument parameters

Instrument Parameter	Value
Run Time Length	5.000 min
Column_temperature	45C
Injection_volume	1µL
Flow_rate	0.7mL/min
Mobile_phase_A:	0.1% TFA in water
Mobile_phase_B:	0.1% TFA in methanol

Gradient Details

Ret. Time [min]	Flow [ml/min]	%B [%]	%C [%]	%D [%]
0.000	0.700	15.0	0.0	0.0
2.500	0.700	65.0	0.0	0.0

Column Details

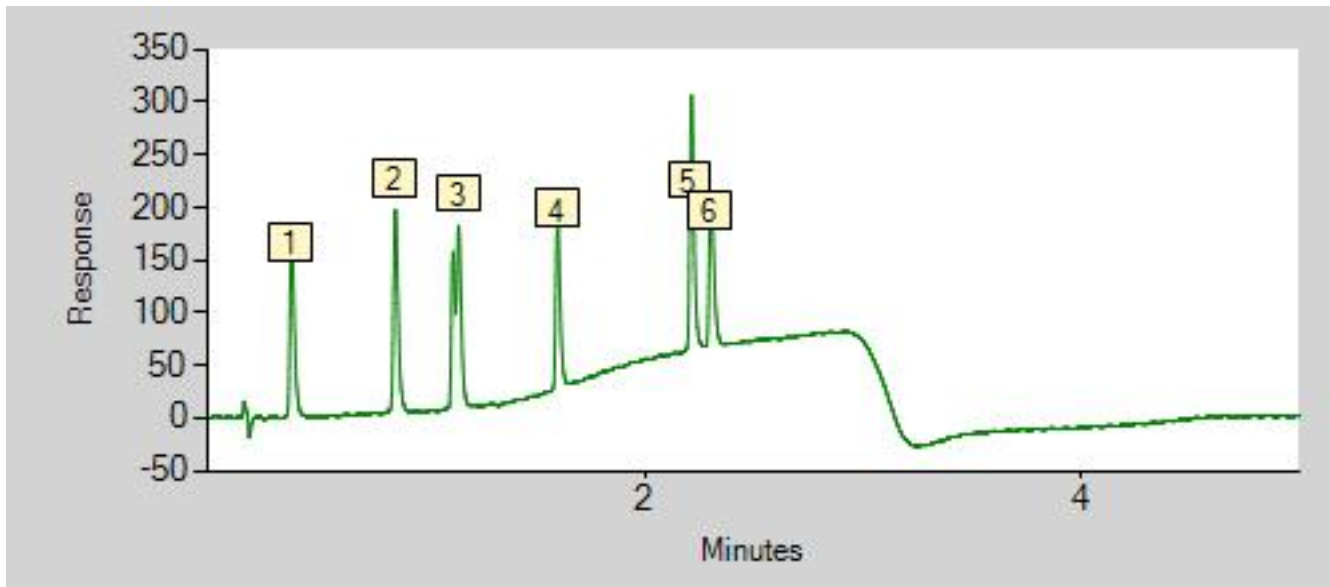
column_A	
Manufacturer	Thermo Scientific
Model	Accucore RP-MS
Diameter	2.1
Length	50
Particle Size	2.6
Packing Material	Accucore RP-MS 2.6 m 50 x 2.1 mm

System information

Instrument Type	UHPLC
-----------------	-------

Results

Channel Detector_1_220nm



No	Peak_Name	*Compound _Class	Retention_Ti me	Peak_Area	Peak_Area_p c	Peak_Height	Peak_Height _pc	Plates_(USP)	Resolution_(USP)	Tailing_Facto r_(USP)
1	Atenolol	n.a.	0.381	4.041	14.36	166.920	15.64	1637	12.62	1.54
2	Pindolol	n.a.	0.857	4.757	16.90	191.886	17.98	8243	7.30	1.42
3	Nadolol	n.a.	1.146	6.891	24.49	171.707	16.09	12202	11.62	0.89
4	Metoprolol	n.a.	1.599	3.731	13.26	158.228	14.82	30658	17.49	1.49
5	Propranolol	n.a.	2.213	5.054	17.96	234.201	21.94	69092	2.41	1.45
6	Alprenolol	n.a.	2.303	3.669	13.04	144.508	13.54	52101	n.a.	1.54

Appendix

The application can be accessed at <http://dlibrary.dionex.com/Public/View.aspx?ApplicationID=609>

Available Downloads

Filename	Size(bytes)
ANCCSCETBETABLK_0611.pdf	580989

Related Information

No related information available.